



# NACAT

## User Manual

Release 4.3 Revision J2



Copyright © 2018 The Nielsen Company (US), LLC. All rights reserved.

Nielsen and the Nielsen Logo are trademarks or registered trademarks of The Nielsen Company (US), LLC.

Other company names, products and services may be trademarks or registered trademarks of their respective companies.

This documentation contains the intellectual property and proprietary information of The Nielsen Company (US), LLC. Publication, disclosure, copying, or distribution of this document or any of its contents is prohibited.

## Revision History

| Revision | Date       | Changes Made   |
|----------|------------|--|
| A        | 2004-04-28 | Initial release  |
| B        | 2008-01-10 | Removed all references to the hardware key, added registered trademark for NACAT, updated the Nielsen logo, and replaced references to nielsenmedia.com with nielsen.com.  |
| C        | 2009-10-29 | Updated EULA   |
| D        | 2011-01-12 | Added references to Nielsen Watermarks detection; added procedures; removed references to Facility Display Setup, which is no longer in the application; removed references to installing from a CD  |
| E        | 2013-12-31 | Added InfoSID display  |
| F        | 2015-01-30 | Removed DirectX API and added WASAPI for audio capturing; enabled SIDMAP display; resolved issues related to InfoSID, which was added in revision E; added option for selecting preferred audio capturing mode as line-in or loopback capture (playback)     |
| G1       | 2017-02-10 | Version 4.0: added CBET detection and settings for changing text color for CBET, instructions on copying and editing the SIDMAP.txt file, and added install of and instructions to run vcredist_x64.exe to install missing DLLs; updated system requirements |
| G2       | 2017-03-08 | Release 4.0.5: main window now has <i>Lx</i> instead of <i>Layer x</i> and shows the SID below <i>System Status</i>  |
| G3       | 2017-12-4  | Release 4.0.8: The Tool/Setup menu now includes a new field, Optional base log-file name, which allows the user to customize the naming of the output files.   |
| H        | 2018-1-25  | Release 4.1: Restructured the software to create separate libraries for decoder classes and to provide more reliable handling of INFO SIDs.  |
| I        | 2018-04-26 | Release 4.2: Updated to use latest decoder software. Added channel-selection to Set-Up menu. Corrected display of CBET time code.  |
| J        | 2018-06-13 | Release 4.2: Edited manual to include description of new features.   |
| J2       | 2018-12-14 | Release 4.3: Edited manual to include description of new feature.  |



## NIELSEN NACAT® End-User Product License Agreement

IMPORTANT LEGAL NOTICE FROM THE NIELSEN COMPANY (US) LLC (.NIELSEN.): READ THESE TERMS CAREFULLY BEFORE INSTALLING AND USING THE NIELSEN AUDIO CODE ANALYSIS TOOL (.NACAT.). BY DOWNLOADING THIS PRODUCT, YOU ACKNOWLEDGE THAT YOU HAVE READ THIS LICENSE AGREEMENT, THAT YOU UNDERSTAND IT, AND THAT YOU AGREE TO BE BOUND BY ITS TERMS. YOU INDICATE ACCEPTANCE BY SELECTING THE "I ACCEPT THE TERMS IN THE LICENSE AGREEMENT" OPTION ON THE LICENSE AGREEMENT DIALOG. IF YOU ARE NOT WILLING TO BE BOUND BY ALL THE TERMS, SELECT THE "I DO NOT ACCEPT THE TERMS IN THE LICENSE AGREEMENT" OPTION ON THE LICENSE AGREEMENT DIALOG AND THE INSTALL PROCESS WILL NOT CONTINUE. THE TERMS "YOU" AND .YOUR. AS USED HEREIN REFERS TO THE END-USER OF THE PRODUCT AND MAY INCLUDE, NATURAL PERSONS, A CORPORATE ENTITY(IES) AND EMPLOYEES THEREOF.

1. Grant of License. NIELSEN grants YOU a limited, non-exclusive, non-sublicensable, non-transferable, revocable license to install and internally use one copy, in object code form only, of NACAT with which this license is distributed (the "Product") and to use any documentation accompanying the Product ("Documentation") on one personal computer located in the United States and owned by YOU for the sole purpose of gross verification and non-qualitative evaluation of the operation of the Nielsen Audio Video Encoder (.NAVE.) equipment that is owned by YOU as a client of Nielsen (the .Purpose.), provided that: (i) the Product is NOT modified and no derivative works or enhancements are made thereto; (ii) the data resulting from the use of the Product is used solely for the Purpose (iii) all identifying marks, copyright and proprietary notices, are maintained on the Product; (iv) YOU agree to be bound by all the terms, conditions and restrictions of this License Agreement (v) YOU are authorized to accept the terms of this License Agreement or have been authorized as an employee of the owner of the NAVE encoder equipment to accept the terms of this License Agreement, and (vi) YOU are the owner, or an employee of the owner, of the NAVE encoder equipment with which the Product will be used.

2. Ownership. The Product and Documentation are licensed and not sold and YOU have no ownership rights in the Product or the Documentation. Ownership of the Product, Documentation and all intellectual property rights therein and good will associated therewith shall remain at all times with and accrue solely to NIELSEN.

3. Intellectual Property. The Product and Documentation contain material that is protected by United States intellectual property laws, including, Copyright Law, trademark law and/or trade secret law, and by international treaty provisions. All rights not expressly granted to YOU herein are reserved by NIELSEN. No right, title or interest in or to any trademark, service mark, logo or trade name of NIELSEN or its licensors is granted under this Agreement.

4. Restrictions. Any use of the Product, Documentation or data resulting from the use thereof for other than the Purpose or by any person, business, corporation, government organization or any other entity other than YOU is strictly forbidden and is a violation of this License Agreement. YOU agree that the Product, Documentation and any data or rate of data resulting from use of the Product and/or Documentation is not intended to be and is not necessarily indicative of either the quality of the NAVE encoding technology or of the quality or accuracy of any television audience measurement data ("the Ratings") provided by NIELSEN. NIELSEN shall not be responsible for providing any technical support, bug fixes, error corrections, updates, replacements, enhancements, or conversions of the Product and/or Documentation or for otherwise maintaining the Product and/or Documentation.

YOU may not publish, display, disclose, rent, lease, modify, loan, distribute, modify, create (or allow others to create) enhancements to create derivative works of the Product, Documentation or any part thereof or any data resulting from the use of the Product and/or Documentation. YOU will not and will not allow any third party to use or interpret any data or rate of data resulting from use of the Product and/or Documentation as indicative of either the quality of the NAVE encoding technology or of the quality or accuracy of the Ratings provided by NIELSEN. YOU may not reverse engineer, decompile, translate, adapt, or disassemble the Product, nor shall YOU attempt to create the source code from the object code for the Product. YOU may transfer the Product to other computers YOU own provided that YOU maintain only a single copy of the Product at any given time. YOU may not distribute the Product



or Documentation or copies of the Product or Documentation to any third party for any reason without the prior, written consent of NIELSEN.

5. Confidentiality. YOU acknowledge that the Product and Documentation may contain proprietary trade secrets of NIELSEN, and YOU hereby agree to maintain the confidentiality of the Product, Documentation and any data resulting from the use of the Product or Documentation using at least as great a degree of care as YOU use to maintain the confidentiality of confidential information owned by YOU and in no case with less than a reasonable standard of care.

6. Disclaimer of Warranty. THE PRODUCT AND DOCUMENTATION ARE BEING SUPPLIED TO YOU FREE OF CHARGE. ANY INSTALLATION OF OR USE BY YOU OF THE PRODUCT, DOCUMENTATION AND/OR DATA RESULTING FROM THE USE THEREOF IS AT YOUR OWN RISK. THE PRODUCT, DOCUMENTATION AND ANY DATA RESULTING FROM THE USE THEREOF ARE PROVIDED "AS IS." TO THE MAXIMUM EXTENT PERMITTED BY LAW, NIELSEN, DISCLAIMS ALL WARRANTIES OF ANY KIND, EITHER EXPRESSED OR IMPLIED, INCLUDING, WITHOUT LIMITATION, IMPLIED WARRANTIES OF MERCHANTABILITY, FITNESS FOR A PARTICULAR PURPOSE AND NON-INFRINGEMENT. NIELSEN DOES NOT WARRANT THAT THE FUNCTIONS CONTAINED IN OR PERFORMED BY THE PRODUCT AND/OR DOCUMENTATION WILL MEET ANY REQUIREMENTS OR NEEDS YOU MAY HAVE, OR THAT THE PRODUCT WILL OPERATE ERROR FREE, OR IN AN UNINTERRUPTED FASHION, OR THAT ANY DEFECTS OR ERRORS IN THE PRODUCT AND/OR DOCUMENTATION WILL BE CORRECTED, OR THAT THE PRODUCT AND/OR DOCUMENTATION IS COMPATIBLE WITH ANY PARTICULAR PLATFORM.

7. Limitation of Liability. IN NO EVENT WILL NIELSEN BE LIABLE TO YOU OR ANY THIRD PARTY FOR ANY INCIDENTAL OR CONSEQUENTIAL DAMAGES (INCLUDING, WITHOUT LIMITATION, INDIRECT, SPECIAL, PUNITIVE, OR EXEMPLARY DAMAGES FOR LOSS OF BUSINESS, LOSS OF PROFITS, BUSINESS INTERRUPTION, OR LOSS OF BUSINESS INFORMATION) ARISING OUT OF THE INSTALLATION, USE OF OR INABILITY TO USE THE PRODUCT AND/OR DOCUMENTATION OR FOR ANY CLAIM BY ANY OTHER PARTY, EVEN IF NIELSEN HAS BEEN ADVISED OF THE POSSIBILITY OF SUCH DAMAGES. SOME STATES DO NOT ALLOW THE EXCLUSION OF INCIDENTAL OR CONSEQUENTIAL DAMAGES, SO SOME OF THE TERMS ABOVE MAY NOT BE APPLICABLE TO YOU. IN NO EVENT WILL NIELSEN'S LIABILITY EXCEED THE GREATER OF THE AMOUNT PAID FOR THE PRODUCT AND DOCUMENTATION LICENSED UNDER THIS AGREEMENT OR ONE U.S. DOLLAR.

8. Export Restrictions. THIS LICENSE AGREEMENT IS SUBJECT TO ANY LAWS, REGULATIONS, ORDERS, OR OTHER RESTRICTIONS ON THE EXPORT FROM THE UNITED STATES OF AMERICA OF THE PRODUCT OR INFORMATION ABOUT SUCH PRODUCT WHICH MAY BE IMPOSED FROM TIME TO TIME BY THE GOVERNMENT OF THE UNITED STATES OF AMERICA. YOU SHALL NOT EXPORT THE PRODUCT AND/OR DOCUMENTATION OR INFORMATION ABOUT THE PRODUCT AND/OR DOCUMENTATION WITHOUT COMPLIANCE WITH SUCH LAWS, REGULATIONS, ORDERS, OR OTHER RESTRICTIONS.

9. Termination. This License Agreement commences when you accept the terms of the License Agreement as provided herein above and will continue, unless earlier terminated earlier in accordance with the terms hereof. YOU may terminate this License Agreement at any time by returning to NIELSEN all copies of the Product and Documentation in your possession or under your control. Upon the first to occur of either the completion of the Purpose or if YOU no longer own the NAVE encoder equipment, YOU are required to return the Product and Documentation to NIELSEN within thirty (30) calendar days after which time this License Agreement shall terminate. NIELSEN may terminate this License Agreement for any or no reason, including but not limited to NIELSEN's determination that YOU have violated any of the terms of this License Agreement. Upon notification of termination, YOU agree to return to NIELSEN all copies of the Product and Documentation. All provisions relating to confidentiality, proprietary rights and non-disclosure shall survive the termination of this License Agreement.

10. General. This License Agreement shall be construed, interpreted and governed by the laws of the State of Illinois without regard to conflicts of law provisions thereof. The exclusive forum for any disputes arising out of or relating to



this License Agreement shall be an appropriate federal or state court sitting in the state of Illinois, USA. This License Agreement shall constitute the entire Agreement between the parties hereto. Any waiver or modification of this License Agreement shall only be effective if it is in writing and signed by both parties hereto. If any part of this License Agreement is found invalid or unenforceable by a court of competent jurisdiction, the remainder of this License Agreement shall be interpreted so as to reasonably effect the intention of the parties. This Agreement is the entire agreement between YOU and NIELSEN relating to its subject matter. It supersedes all prior or contemporaneous oral or written communications, proposals, representations and warranties and prevails over any conflicting or additional terms of any quote, order, acknowledgment, or other communication between the parties relating to its subject matter during the term of this Agreement. No modification of this Agreement will be binding, unless in writing and signed by an authorized representative of each party.



# Contents

|   |           |
|---|-----------|
| <b>Overview .....</b>                             | <b>8</b>  |
| Customer Support: Encoder Support Group .....     | 8         |
| System Requirements .....                         | 8         |
| Incompatibilities and Performance Anomalies ..... | 9         |
| <b>Set Up the NACAT Application .....</b>         | <b>9</b>  |
| Install NACAT .....                               | 9         |
| Set Up Audio Input .....                          | 9         |
| Adjust Audio Input for Line-In Audio .....        | 11        |
| <b>Use NACAT .....</b>                            | <b>15</b> |
| Edit Preferences .....                            | 15        |
| Change How NACAT Displays SIDs .....              | 17        |
| <b>Uninstall NACAT .....</b>                      | <b>18</b> |
| <b>NACAT Window Description .....</b>             | <b>19</b> |
| <b>Troubleshooting Tips .....</b>                 | <b>21</b> |

## List of Figures

|   |    |
|---|----|
| Figure 1 – Audio Capture Mode Setting .....                 | 10 |
| Figure 2 - Waveforms Showing Correct Audio Adjustment ..... | 11 |
| Figure 3 – Sound Playback Levels .....                      | 12 |
| Figure 4 – Sound Mixer .....                                | 12 |
| Figure 5 – Playback Device Audio Levels .....               | 13 |
| Figure 6 – Playback Device Sample Rate and Bit Depth .....  | 13 |
| Figure 7 – Recording Device .....                           | 14 |
| Figure 8 – Recording Device Audio Levels for Line In .....  | 14 |
| Figure 9 – Setup Dialog Box .....                           | 16 |
| Figure 10 – With Name for SID .....                         | 18 |
| Figure 11 – Without Name for SID .....                      | 18 |
| Figure 12 - NACAT Main Window Sections .....                | 19 |

## List of Tables

|  |    |
|--|----|
| Table 1 – Preferences .....                      | 16 |
| Table 2 – Window Description for Figure 13 ..... | 19 |

# Overview

NACAT®—Nielsen Audio Code Analysis Tool—is software that captures audio, decodes Nielsen audio codes, and logs and displays the information to the user. The NACAT application enables monitoring, troubleshooting, and verification of Nielsen audio encoders. NACAT decodes the following:

- Program content (PC)
- Final distributor (FD)
- Network layer (CBET – NETTS)
- Local layer (CBET – LOC)
- Time stamp
- Encoded channel (left and right displayed, only left monitored)
- Source Identifier (SID)
- Type of encoding (commercial or non-commercial)
- DST (Daylight Saving Time) or Standard Time

This document covers how to install NACAT, set it up to monitor Nielsen audio encoders, and change preferences.

## Customer Support: Encoder Support Group

|                  |  |
|------------------|--|
| Telephone        | 800-537-4872 option 2  |
| Email            | <a href="mailto:Encoders@Nielsen.com">Encoders@Nielsen.com</a>                   |
| Software Updates | <a href="http://engineeringportal.nielsen.com">engineeringportal.nielsen.com</a> |

## System Requirements

For the best NACAT software performance, the PC on which it runs should have the following configuration.

- Microsoft® Windows 7 operating system or a later version (64-bit)
- 1 GHz or faster 64-bit processor
- Minimum of 4 GB RAM memory
- 15 MB of hard disk space for the application
- 20 MB or more of hard disk space for log files (Periodic maintenance of these files may be required.)



**Note** A typical log file requires approximately 2 MB of hard disk space/day.

- Line level audio input (-10dBV consumer IHF input level)

## Incompatibilities and Performance Anomalies

NACAT has **not** been fully qualified on all configurations of operating software and computer hardware, and you may experience anomalies with your particular configuration. Contact the Encoder Support Group to report any NACAT abnormalities you experience.

When using a laptop, it is recommended that it should have a direct Line-input to the sound card instead of connecting through a port replicator. Microphone input to the sound card as an audio source is **not** recommended and is **not** supported.

## Set Up the NACAT Application

Follow the install instructions and then perform the procedure to set up audio input.

### Install NACAT

Use this procedure to install the NACAT application to a hard drive.

1. Use Control Panel to remove any previously installed versions of NACAT. Make certain that all files are removed from the "Program Files (x86)\Nielsen\NACAT" folder.
2. Double-click NACAT\_Installer\_4.3.exe.
3. Follow the prompts. When the installation is complete, an icon for NACAT appears on the Desktop and entries for NACAT and vcredist\_64-bit.exe appear in the Start menu.

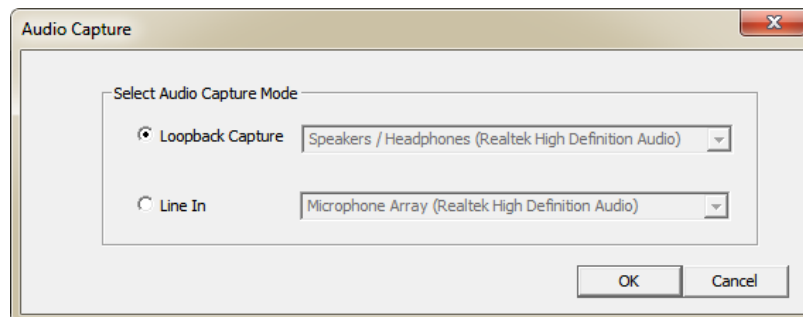
### Set Up Audio Input

**Important** **Do not use the microphone input;** the frequency response of the microphone input could adversely affect the code detection performance of the NACAT application.

1. Do one of the following:
  - If you are monitoring file-based streams, go to step 2.
  - If you are monitoring line input, connect audio line level input sources to the Line In ports on the sound card. Connecting to the left audio is necessary; connecting to the right is optional. Line In is the only supported recording input.

2. Start the NACAT application. One of the following occurs:
  - Messages about missing DLLs appear. Go to step 3.
  - NACAT starts and a Preferences dialog box appears. Go to step 4.
  - NACAT starts without a dialog box appearing. Go to step 5.
3. From the Start menu, launch vcredist\_x64.exe. The executable installs the missing DLLs. Restart the NACAT application and do one of the following:
  - If a Preferences dialog box appears, go to step 4.
  - If a Preferences dialog box does not appear, go to step 5.
4. To accept the current preferences, click Cancel, or to change any of the current values, refer to the table in “Edit Preferences.” When you have finished, go to step 5.
5. Verify the input mode is correct for your setup. On the Menu Bar, click Tool > Audio Capture Mode.
6. On the dialog box, do one of the following:
  - For detection of codes in a file, select Loopback Capture, and click OK. Go to “Use NACAT” on page 15.
  - For detection of codes in a live stream, select Line In and click OK. See “Adjust Audio Input for Line-In Audio” below.

**Note** NACAT retains this setting from session to session.



**Figure 1 – Audio Capture Mode Setting**

## Adjust Audio Input for Line-In Audio

The goal of these adjustments is to keep the waveforms on the NACAT window within the correct range for audio code detection as shown in Figure 2.

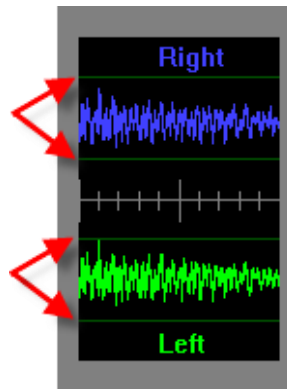


Figure 2 - Waveforms Showing Correct Audio Adjustment

1. Connect audio line level input sources to the Line-In ports on the sound card.

**Important** Do not use the microphone input as a line in source. The frequency response of the microphone input could adversely affect the code detection performance of the NACAT application

2. Place the NACAT window (#1 in Figure 3) so that when you open the Sound (#2) and Properties (#3) windows in the next 2 steps, you can watch the waveforms as you adjust the levels.
3. On the menu bar, select Tool > Sound Mixer. The Windows Sound dialog box appears.

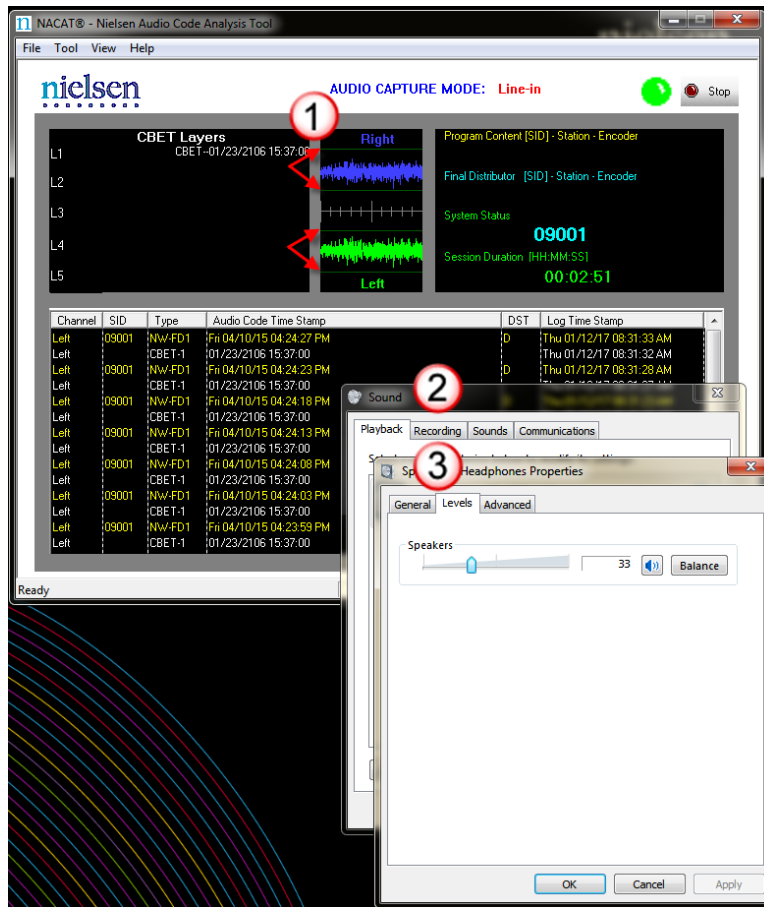


Figure 3 – Sound Playback Levels

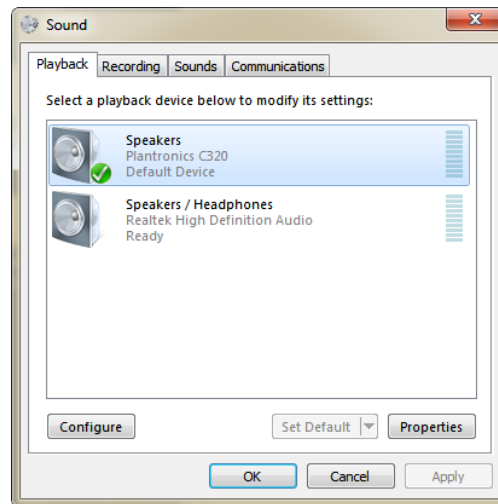


Figure 4 – Sound Mixer

4. Select the default playback device.
5. Click Properties.

- Click the Levels tab and adjust the volume levels so that the waveforms on the NACAT window are within the proper range (Figure 2).

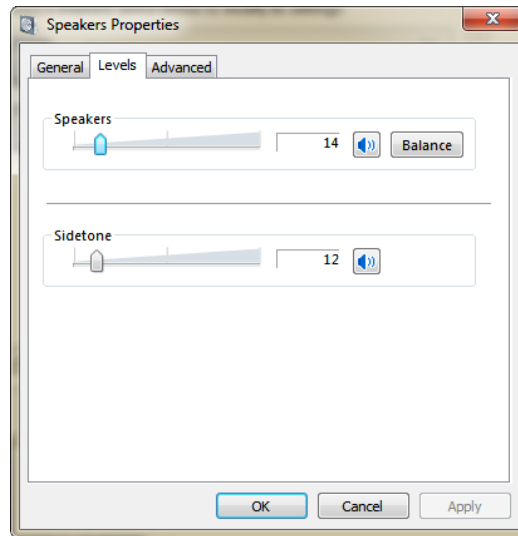


Figure 5 – Playback Device Audio Levels

- Click the Advanced tab and, in Default Format, **ALWAYS** select 16 bit, 48000 Hz (DVD Quality).

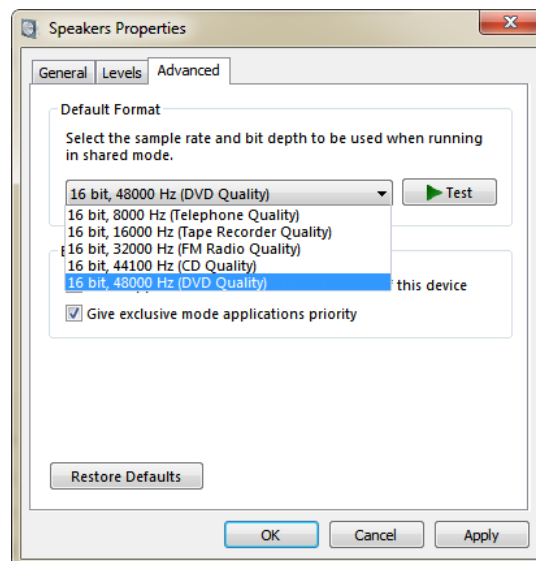


Figure 6 – Playback Device Sample Rate and Bit Depth

- To close the Properties dialog box, click OK.
- On the Sound dialog box, click the Recording tab.

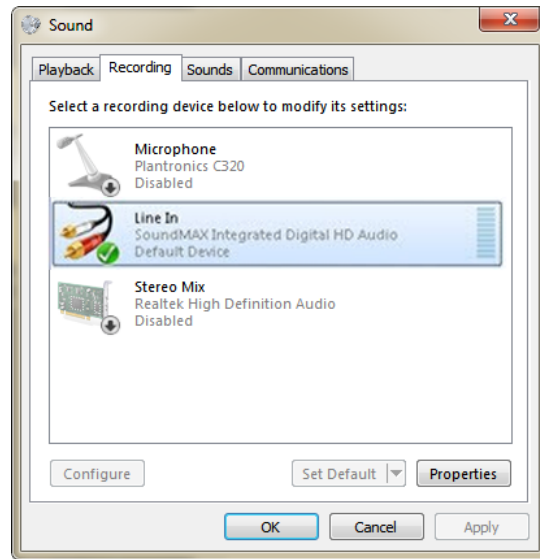


Figure 7 – Recording Device

10. Select the default device and click Properties.
11. Click the Levels tab.
12. Adjust the Line In level so that the waveforms on the NACAT window are within the correct range.

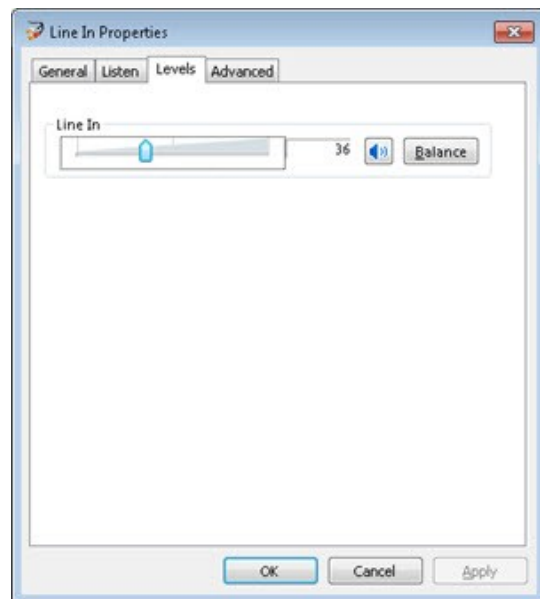


Figure 8 – Recording Device Audio Levels for Line In

13. Close the Recording Control panel.
14. Go to “Use NACAT” in the next section.

# Use NACAT

1. Do one of the following:
  - If you are monitoring file-based streams, begin playing the file and go to step 2.
  - If your setup uses line input and you have not already done so, connect the device running the audio signal to the Line In port of the PC running the NACAT application.
2. Open the NACAT application.

**Note** If you need to change the audio settings, see “Set Up the Audio Input” on page 9.
3. On the NACAT main window, click Start. For details on understanding the window, see “NACAT Window Description” on page 19.

## Edit Preferences

Changing the values in the Setup dialog box is optional.

The NACAT Setup dialog box enables you to change features such as the text color for the codes, when “no code” warnings appear, whether to alert when no codes are detected, and so on. There are also options to change the default location for storing log files, the sound of the no code alarm, and whether or not to display the InfoSID.

1. Click the Stop button on the main window.
2. On the Tool menu, select Setup.
3. On the Setup window, click a field and either click the ellipsis (...) or click a selection on a drop-down menu.
4. When you have made all of your changes, click OK on the Setup window.
5. Click Start on the main window to resume audio-stream processing.

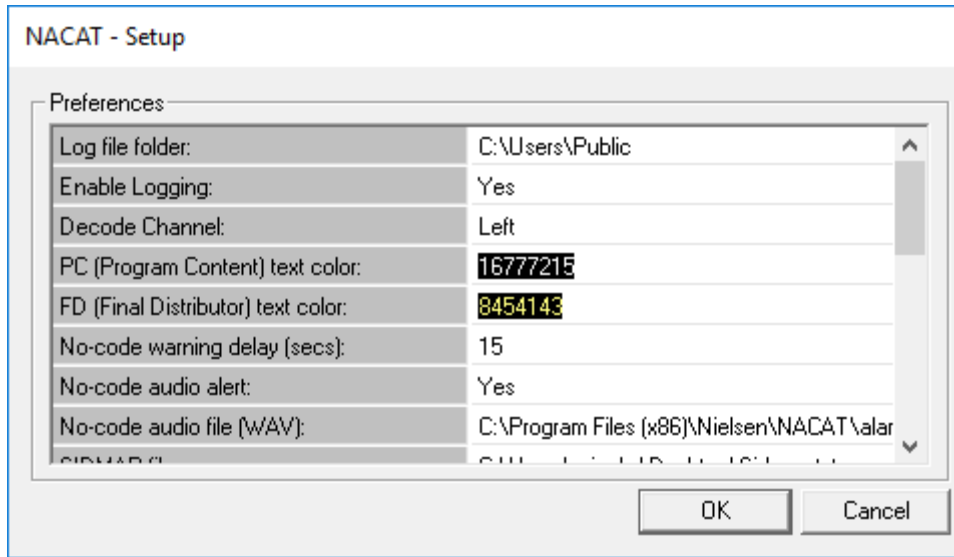


Figure 9 – Setup Dialog Box

Table 1 – Preferences

| Preference  | Description   |
|---|---|
| Log file folder   | When “Enable logging” is set to “Yes,” the “Log file folder” field identifies the location where the log files are created and stored   |
| Enable Logging  | When “Enable Logging” is set to Yes, NACAT creates output files in the Log file folder.   |
| Decode Channel  | Select Left to decode the left channel, select Right to decode the right channel or select Both to decode both left and right channels. Note that if you change the decode-channel while the audio is streaming, there will be a transition period during which the buffered audio codes from the original channel will be incorrectly labeled with the name of the new channel, both on the screen and in the log files. |
| PC (Program Content) text color<br>FD (Final Distributor) text color<br>NAES2 codes text color<br>NW codes text color<br>CBET codes text color<br>CBET Layer 1 text color<br>CBET Layer 2 text color<br>CBET Layer 3 text color<br>CBET Layer 4 text color<br>CBET Layer 5 text color | Assigns a color to the code details that appear in the Session Information and History sections on the main window.<br><b>Note</b> Although you can set each type of code to a different color, too much variety can be distracting.  |



| Preference                   | Description  |
|------------------------------|--|
| No-code warning delay (secs) | Sets the maximum number of seconds that can pass without any codes detected before an alert is issued or an alarm is sounded.  |
| No-code audio alert          | Establishes whether an audio alert sounds when audio codes are missing for longer than the value in “No-code warning delay”.   |
| No-code audio file (WAV)     | Assigns an audio file to play when “No-code warning delay” value is exceeded   |
| SIDMAP file                  | Identifies the location of the file that determines how the SID displays in the upper left and upper right panels. See “Change How NACAT Displays SIDs” in the next section. |
| Display InfoSID              | Establishes whether, when present, InfoSIDs are reported in the infosid output file.   |
| InfoSID data file            | (Used by original equipment manufacturers)<br>Assigns location of the InfoSID.xml file, which specifies parameters of the encoder  |
| CSid(Layer 1) view Login     | For back office use only   |
| Optional base log-file name  | Allows the user to customize the output file names by defining a prefix.   |
| Decimal Or Hexadecimal(CBET) | Sets the numeral system in which CBET SIDs appear in the history window.   |
| Enable CBET                  | Set CBET details to appear or not  |

## Change How NACAT Displays SIDs

To change how station identifiers display in NACAT, edit the SIDMAP.txt file.

1. In a Windows Explorer, browse to the location of the NACAT.exe file.
2. Copy the file, SIDMAP.txt, to a different location (such as your Desktop).

**Note** In Settings, enter the location of your copy of the file into the “SIDMAP file” field. See “Edit Preferences” on the previous page.

3. In a text editor, open your copy of SIDMAP.txt (Figure 10).

### Example

```

9001, Test SID 1
9002, Test SID 2
32750, RTVOD C3 Hardware
32751, RTVOD C7 Hardware
32755, RTVOD C3 Software
32756, RTVOD C7 Software
32762, InfoSID 1

```

```
32763, InfoSID 2
32764, InfoSID 3
0xf302, CBET Test SID 1
```

4. Do any of the following that apply:

- At the end of the file, press <Enter> and add a new line in the format:

**SID, Name**

Where,

The SID is in decimal or hexadecimal format. For CBET SIDs, exclude the CBET layer, entering only the last 4 hexadecimal digits.

The name is alphanumeric.

**Note** In the example in step 3, the last line displays an identifier CBET in hexadecimal.

- Edit an existing line to add a name for a SID (Figure 11).
- Edit an existing line to remove the name of a SID (Figure 12).

5. Save the file.

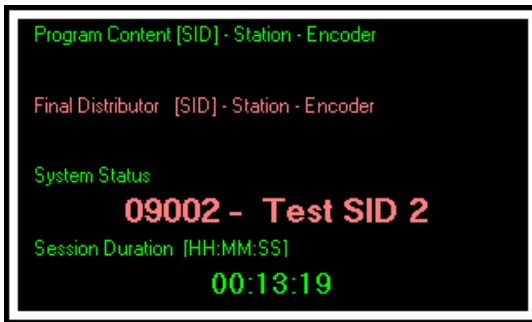


Figure 10 – With Name for SID

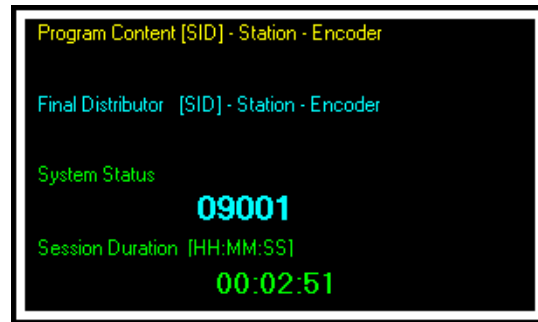


Figure 11 – Without Name for SID

# Uninstall NACAT

To uninstall the NACAT application, use the Windows Control Panel procedure for uninstalling programs. When the Control Panel indicates that NACAT has been uninstalled, make certain that all contents of the NACAT installation folder (C:\Program Files (x86)\Nielsen\NACAT) have been removed.

**Note** A message may appear indicating that one or more of the OLE objects did not properly uninstall. This message does not indicate an actual problem so it requires no action.

# NACAT Window Description

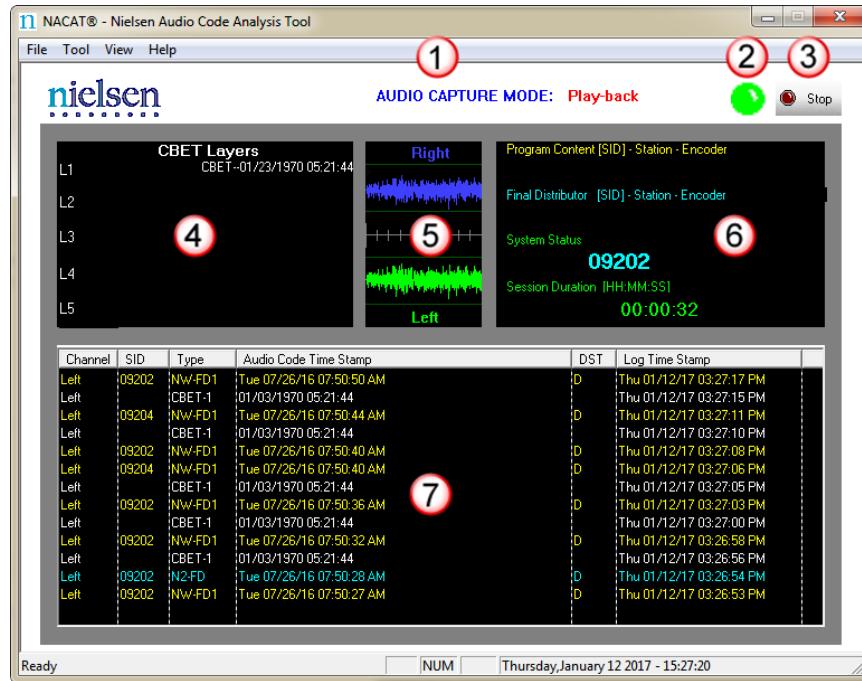


Figure 12 - NACAT Main Window Sections

The main window includes the following components. Refer to the numbers, 1 through 7, in Figure 13.

Table 2 – Window Description for Figure 13

| Number | Description  |
|--------|--|
| 1      | Audio Capture Mode: Play-back (Loopback Capture) or Line-In  |
| 2      | LED: flashes to indicate that a Source Identification (SID) code has been received   |
| 3      | Start/Stop: starts and stops monitoring  |
| 4      | CBET Session Information: Displays the identifier (CSID) of the CBET information found in the signal. The “Lx” label at the left of each row identifies the CBET layer to which the CSID pertains. If the CSID appears in the SID Map file, then station information appears in the window adjacent to the CSID. |
| 5      | Audio wave display: displays the right and left channels of the incoming audio   |

| Number | Description  |
|--------|--|
| 6      | <p>NAES Session information: displays the following information found in the signal:</p> <ul style="list-style-type: none"> <li>• Program Content SID: displays the most recently detected PC code. <ul style="list-style-type: none"> <li>• N2: indicates the code is NAES II code</li> <li>• N2HF: indicates the code is NAES II High-Frequency</li> <li>• NW: indicates the code is Nielsen Watermarks code</li> <li>• NWCC: indicates Nielsen Watermarks commercial code</li> </ul> </li> <li>• Final Distributor SID: displays the SID, Date, Time, and DST status for the most recently detected NAES II or Nielsen Watermarks Final Distributor code.</li> <li>• System Status: displays messages and warnings during an active monitoring session</li> <li>• Session Duration: displays the monitoring period for this session</li> </ul>  |
| 7      | <ul style="list-style-type: none"> <li>• History: displays a running log of the audio codes that have been received. This information is stored in a set of log files. When a new session begins, NACAT automatically generates a new set of log files. For information on where the log files are stored or for instructions changing their location, see “Edit Preferences” on page 15.</li> <li>• Channel: Indicates the audio channel that is being decoded.</li> <li>• SID: specifies the Source Identification number that enables Nielsen to credit viewing</li> <li>• Type: specifies the audio code type. The user may customize the color display for each of the NAES code types (PC, FD) as well as for each of the CBET layers. See “Edit Preferences” on page 15.”</li> <li>• Audio Code Time Stamp: displays the date and time stamp for the corresponding SID. CBET time rolls over every 28 days, so dates may appear in the future and may not match the Log Time Stamp.</li> <li>• DST: specifies whether DST was in effect for the encoder that generated the audio codes (applies to NAES codes only) <ul style="list-style-type: none"> <li>• S indicates that the time stamp is set for Standard Time</li> <li>• D indicates that the time stamp is set for DST</li> </ul> </li> <li>• Log Time Stamp: specifies the date and time NACAT detected the code</li> </ul> <p>Note that for INFO SIDs, additional information may be displayed if it is available in the InfoSID.xml file.</p> |

# Troubleshooting Tips

| If...  | Try this:   |
|--|---|
| Audio level is too low   | On the Tool menu, select Recording Control and adjust the audio level of the Line input, so that the audio signal is within the green lines.  |
| No audio on either channel                                       | <ul style="list-style-type: none"> <li>• Ensure that the physical connection is connected into the Line input jack.</li> <li>• On the Tool menu, select Recording Control and ensure that the Line input is selected.</li> </ul>  |
| Audio on one channel only  | <ul style="list-style-type: none"> <li>• Ensure that you have audio input for both channels.</li> <li>• Ensure that the RCA plugs are properly plugged into both the audio source and the PC running NACAT.</li> </ul>  |
| No Nielsen Codes detected  | <ul style="list-style-type: none"> <li>• Ensure that the station being monitored is encoded with NAES II, NAES II HF, Nielsen Watermarks, Nielsen Watermarks Commercial Code, and/or CBET Layers 1 through 5.</li> <li>• Ensure the audio signal is between the green lines.</li> <li>• Ensure the Stop button appears in the upper right corner of the main window. If the Start button appears, click it to start monitoring.</li> <li>• Ensure that the selected channel is receiving an audio signal.</li> <li>• Before making any change to the audio hardware configuration, exit NACAT; restart NACAT when all hardware is reconnected.</li> </ul> |
| NACAT application does not launch                                | <ul style="list-style-type: none"> <li>• Ensure that your system meets the minimum system requirements.</li> <li>• NACAT system files may be corrupted. Uninstall and reinstall the NACAT application.</li> </ul>   |
| Not receiving a “No FD code audio alert”                         | <p>On the <b>Tool</b> menu, select Setup and ensure the following:</p> <ul style="list-style-type: none"> <li>• That you have not been receiving an FD code longer than the setting in the “No FD code warning delay (minutes)” field</li> <li>• That a working WAV audio file is selected in the No FD code audio file (WAV) field. The WAV audio file must be shorter in duration than the no-audio-code delay value (in seconds) that you selected on the setup menu.</li> </ul>   |
| Pressing the space bar on my keyboard causes processing to stop. | On some computers, pressing the space bar has the same effect as clicking the Stop button. Avoid pressing the space bar while NACAT is processing an audio stream.  |

| If...  | Try this:  |
|--|--|
| I installed the new software, but it appears that the previously installed NACAT version is running. | Make certain that before installing the new version of NACAT, you first used Control Panel to uninstall the previous NACAT version. After uninstalling, make certain that all contents of the NACAT installation folder have been removed. |
| No log files are generated during audio processing   | Make certain that the log file folder that you selected on the Tools/Setup menu exists and is writable.  |
| After running NACAT for a long period of time, the application crashes.                              | The history window consumes memory as it scrolls. Make certain that your computer has enough memory to run the application long-term. If not, you should periodically clear the history window.  |